

# Grill Tool

An inspired combination of **GR**inding and **MILL**ing.

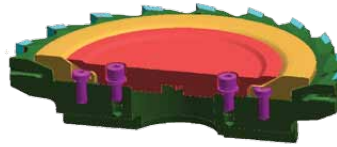


## A COMBINATION GRINDING AND MILLING TOOL

- Ideal for machining engine blocks & sealing surfaces on hydraulic components
- Helps achieve faster cycle time
- Special grinding wheel design prevents wheel clogging

# GRILL

The wiper inserts of a finish face mill are replaced with a super-abrasive grinding disk

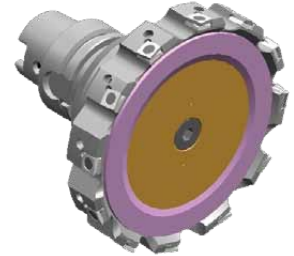
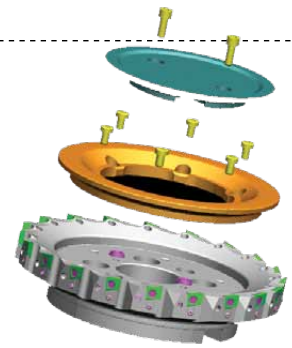


Tool is treated like a milling tool

- Insert type and density is matched to the grinding wheel
- No dressing or truing necessary
- No special machine guarding required
- Grinding disk actuated by high pressure coolant

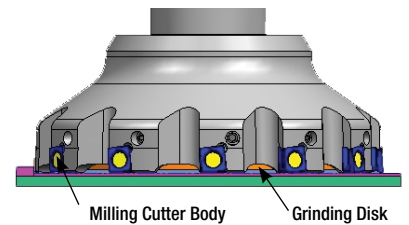
Two different machining strategies depending upon stock removal

- Mill and Grind simultaneously
  - Semi finish with milling and finish with grinding
- Mill and then grind in separate passes
- Strategies dependent upon material stock to be removed.

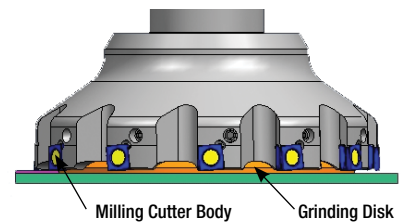


Grill Tool Solid Model

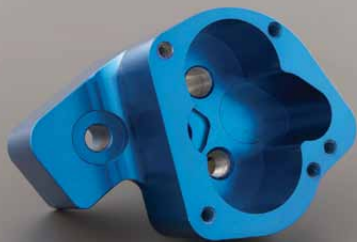
Sr. No.	"Machine Model"	Tool Holder Spec	Recommended Overall Tool Size Standard Grill Dia. in mm
<b>NH SERIES- HORIZONTAL MACHINING CENTER</b>			
1	NH4000/40	CAT/BT 40 / HSK 63	140
2	NH5000/40	CAT/BT 40 / HSK 63	140
3	NH5000/50	CAT/BT 50 / HSK 100	250
4	NH6300/50	CAT/BT 50 / HSK 100	250
5	NH8000/50	CAT/BT 50 / HSK 100	250
<b>NT SERIES- MILL TURN MACHINING CENTER</b>			
1	NT3200	C5/BT40 / HSK 63	125
2	NT4200	C6/BT40 / HSK 63	140
3	NT4250	C6/BT40 / HSK 63	140
4	NT4300	C6/BT40 / HSK 63	140
5	NT5400	C8/BT50 / HSK 100	250
<b>NV SERIES- VERTICAL MACHINING CENTER</b>			
1	NV4000/40	CAT/BT 40 / HSK 63	125
2	NV5000/40	CAT/BT 40 / HSK 63	125
3	NV6000/40	CAT/BT 40 / HSK 63	125
4	NV6000/50	CAT/BT 50 / HSK 100	125
<b>NMV SERIES- 5 AXIS MACHINING CENTER</b>			
1	NMV5000/40	CAT/BT40	125



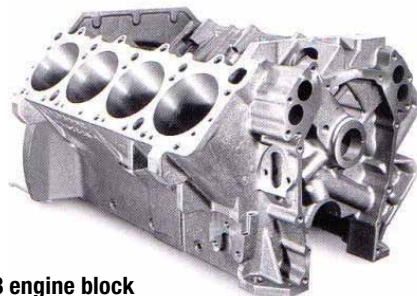
Grinding Disk at its retracted position  
Machining Operations: Milling



Grinding Disk at its actuated position  
Machining Operations: Milling and Grinding simultaneously or just Grinding



Hydraulic component  
Courtesy of Moroso Performance Products



V8 engine block